

Directive 97/23/EC

Keywords :

Piping

Directive references:

Article 1 § 2.1.2 - 97/23 EC

Article 1 § 3.10 - 97/23 EC

Article 1 § 3.6 - 97/23 EC

Adopted by WPG: 07/03/2013

Adopted by CLAP: 07/03/2013

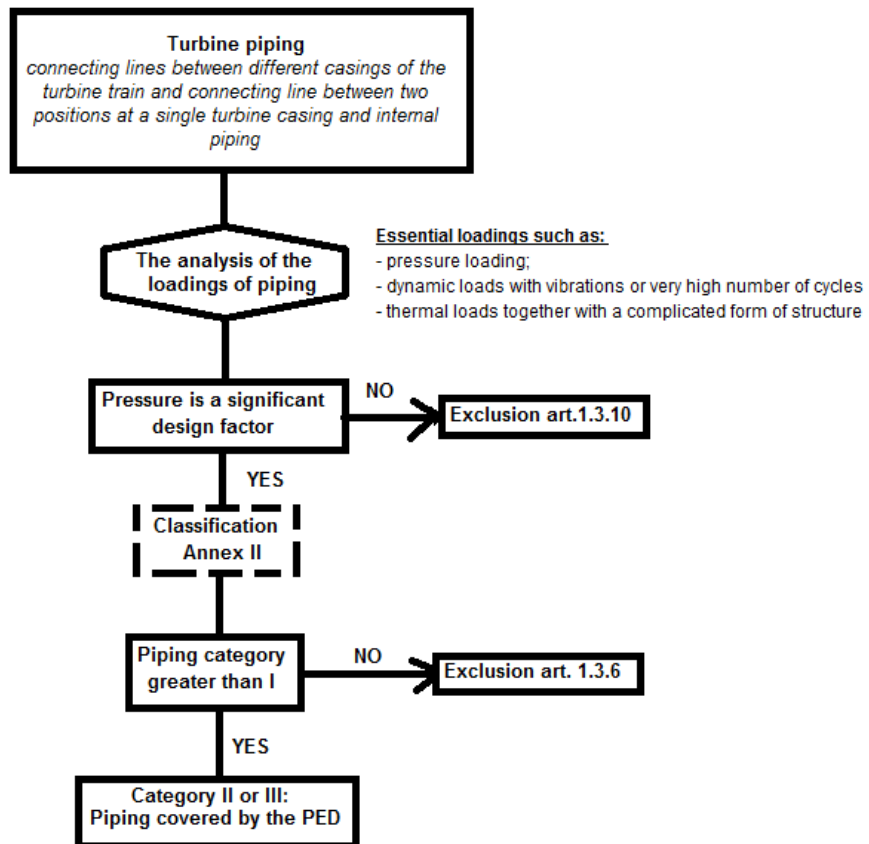
Subject: Scope – Turbine piping

Question: Is turbine piping covered by the Pressure Equipment Directive (PED)?

Answer:

½

Turbine piping defined as “connecting lines between different casings of the turbine train and connecting line between two positions at a single turbine casing and internal piping” is evaluated as follows:



Guideline

1/55

CLAP

FORM N°301

Version : 1

Directive 97/23/EC

Keywords :

Piping

Directive references:

Article 1 § 2.1.2 - 97/23 EC

Article 1 § 3.10 - 97/23 EC

Article 1 § 3.6 - 97/23 EC

Adopted by WPG: 07/03/2013

Adopted by CLAP: 07/03/2013

Subject: Scope – Turbine piping

Question: Is turbine piping covered by the Pressure Equipment Directive (PED)?

Answer: 2/2

Note 1: The manufacturer has the ultimate responsibility to perform a hazard analysis and to determine the Directives applicable to the equipment.

Note 2: Inlet and outlet piping is not part of the turbine, so it shall be evaluated separately against PED.

Note 3: See also guidelines 1/11, 1/26 and 8/4.

Adopted by WGP on 2013-03-07